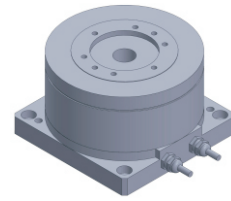


FI-8050

DD Motor



MAIN PARAMETERS	VALUE
Voltage(VAC)	220
Rated torque (Nm)	0.9
Instant Max Torque (Nm)	2.7
Torque constant (Nm/Arms)	0.28
Rated Current (Arms)	3.2
Instant Max Current (Arms)	9.6
Resistance (Ω)	1.3
Inductance (mH)	1.7
Pole-pairs number (2P)	5
Back EMF coefficient (Vrms/rad/s)	0.2
Rated Output (W)	28.3
Rotor inertia 10^{-4} kg.m ²	1.5
Rated Speed (rpm)	300
Max Speed (rpm)	600
Positioning accuracy(arc_sec)	± 50
Repeat positioning accuracy (arc_sec)	± 2.5
Encoder resolution (sin/cos)	5000
Axial load (N)	800
Radial load (N.m)	10
Axial runout (mm)	≤ 0.03
Radial runout (mm)	≤ 0.03
Weight (kg)	1.5

Specification & drawing

