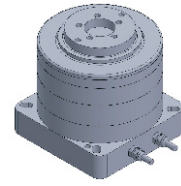


# FI-6080

## DD Motor



| MAIN PARAMETERS                           | VALUE       |
|---|-------------|
| Voltage(VAC)                              | 220         |
| Rated torque (Nm)                         | 1           |
| Instant Max Torque (Nm)                   | 4.4         |
| Torque constant (Nm/Arms)                 | 0.4         |
| Rated Current (Arms)                      | 2.5         |
| Instant Max Current (Arms)                | 11          |
| Resistance ( $\Omega$ )                   | 3.5         |
| Inductance (mH)                           | 3           |
| Pole-pairs number (2P)                    | 10          |
| Back EMF coefficient (Vrms/rad/s)         | 0.3         |
| Rated Output (W)                          | 31.4        |
| Rotor inertia $10^{-4}$ kg.m <sup>2</sup> | 0.8         |
| Rated Speed (rpm)                         | 300         |
| Max Speed (rpm)                           | 600         |
| Positioning accuracy(arc_sec)             | $\pm 40$    |
| Repeat positioning accuracy (arc_sec)     | $\pm 4$     |
| Encoder resolution (sin/cos)              | 4096        |
| Axial load (N)                            | 700         |
| Radial load (N.m)                         | 10          |
| Axial runout (mm)                         | $\leq 0.01$ |
| Radial runout (mm)                        | $\leq 0.01$ |
| Weight (kg)                               | 1           |

### Specification & drawing

