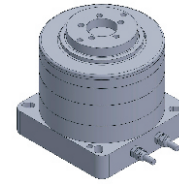


# FI-6060 DD Motor



MAIN PARAMETERS	VALUE
Voltage(VAC)	220
Rated torque (Nm)	0.5
Instant Max Torque (Nm)	1.6
Torque constant (Nm/Arms)	0.2
Rated Current (Arms)	2.5
Instant Max Current (Arms)	8
Resistance (Ω)	4
Inductance (mH)	3.6
Pole-pairs number (2P)	10
Back EMF coefficient (Vrms/rad/s)	0.2
Rated Output (W)	15.7
Rotor inertia 10 <sup>-4</sup> kg.m <sup>2</sup>	0.55
Rated Speed (rpm)	300
Max Speed (rpm)	600
Positioning accuracy(arc_sec)	± 40
Repeat positioning accuracy (arc_sec)	± 4
Encoder resolution (sin/cos)	4096
Axial load (N)	700
Radial load (N.m)	10
Axial runout (mm)	≤0.01
Radial runout (mm)	≤0.01
Weight (kg)	0.8

## Specification & drawing

