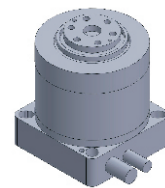


FI-4065 DD Motor



MAIN PARAMETERS	Value
Voltage (VDC)	48
Rated torque (Nm)	0.5
Instant Max Torque (Nm)	1.3
Torque constant (Nm/Arms)	0.17
Rated Current (Arms)	3
Instant Max Current (Arms)	8
Resistance (Ω)	2.4
Inductance (mH)	1.7
Pole-pairs number (2P)	7
Back EMF coefficient (Vrms/rad/s)	0.12
Rated Output (W)	15.7
Rotor inertia 10^{-4} kg.m ²	0.05
Rated Speed (rpm)	300
Max Speed (rpm)	600
Positioning accuracy(arc_sec)	± 40
Repeat positioning accuracy (arc_sec)	± 5
Encoder resolution (sin/cos)	2048
Axial load (N)	600
Radial load (N.m)	6
Axial runout (mm)	≤ 0.01
Radial runout (mm)	≤ 0.01
Weight (kg)	0.55

Specification & drawing

