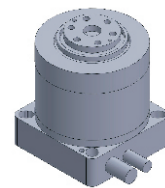


FI-4048 DD Motor



MAIN PARAMETERS	Value
Voltage (VDC)	48
Rated torque (Nm)	0.25
Instant Max Torque (Nm)	0.8
Torque constant (Nm/Arms)	0.1
Rated Current (Arms)	2.5
Instant Max Current (Arms)	8
Resistance (Ω)	1.8
Inductance (mH)	1.1
Pole-pairs number (2P)	7
Back EMF coefficient (Vrms/rad/s)	0.1
Rated Output (W)	7.9
Rotor inertia 10^{-4} kg.m ²	0.04
Rated Speed (rpm)	300
Max Speed (rpm)	600
Positioning accuracy(arc_sec)	± 40
Repeat positioning accuracy (arc_sec)	± 5
Encoder resolution (sin/cos)	2048
Axial load (N)	600
Radial load (N.m)	6
Axial runout (mm)	≤ 0.01
Radial runout (mm)	≤ 0.01
Weight (kg)	0.4

Specification & drawing

