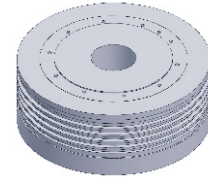


FI-375200

DD Motor



MAIN PARAMETERS	VALUE
Voltage(VAC)	220
Rated torque (Nm)	320
Instant Max Torque (Nm)	1000
Torque constant (Nm/Arms)	45
Rated Current (Arms)	8
Instant Max Current (Arms)	25
Resistance (Ω)	5.2
Inductance (mH)	32
Pole-pairs number (2P)	42
Back EMF coefficient (Vrms/rad/s)	26.6
Rated Output (W)	2012.2
Rotor inertia 10^{-4} kg.m ²	5200
Rated Speed (rpm)	60
Max Speed (rpm)	120
Positioning accuracy(arc_sec)	± 20
Repeat positioning accuracy (arc_sec)	± 1.5
Encoder resolution (sin/cos)	16384
Axial load (N)	20000
Radial load (N.m)	1200
Axial runout (mm)	≤ 0.005
Radial runout (mm)	≤ 0.005
Weight (kg)	90

Specification & drawing

