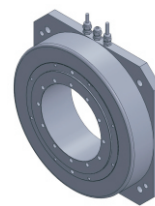


# FI-30075 DD Motor



MAIN PARAMETERS	VALUE
Voltage(VAC)	220
Rated torque (Nm)	35
Instant Max Torque (Nm)	105
Torque constant (Nm/Arms)	7
Rated Current (Arms)	5
Instant Max Current (Arms)	15
Resistance ( $\Omega$ )	2.4
Inductance (mH)	11.2
Pole-pairs number (2P)	23
Back EMF coefficient (Vrims/rad/s)	4.5
Rated Output (W)	330.1
Rotor inertia $10^{-4}kg.m^2$	630
Rated Speed (rpm)	90
Max Speed (rpm)	180
Positioning accuracy(arc_sec)	$\pm 20$
Repeat positioning accuracy (arc_sec)	$\pm 1.5$
Encoder resolution (sin/cos)	16384
Axial load (N)	4000
Radial load (N.m)	120
Axialrunout (mm)	$\leq 0.005$
Radial runout (mm)	$\leq 0.005$
Weight (kg)	24.2

## Specification & drawing

