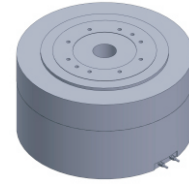


FI-220208

DD Motor



MAIN PARAMETERS	VALUE
Voltage(VAC)	220
Rated torque (Nm)	115
Instant Max Torque (Nm)	350
Torque constant (Nm/Arms)	14.4
Rated Current (Arms)	5.75
Instant Max Current (Arms)	17.5
Resistance (Ω)	4.2
Inductance (mH)	14
Pole-pairs number (2P)	26
Back EMF coefficient (Vrms/rad/s)	7.9
Rated Output (W)	1446.2
Rotor inertia 10^{-4} kg.m ²	560
Rated Speed (rpm)	120
Max Speed (rpm)	240
Positioning accuracy(arc_sec)	± 20
Repeat positioning accuracy (arc_sec)	± 1.5
Encoder resolution (sin/cos)	11740
Axial load (N)	20000
Radial load (N.m)	500
Axial runout (mm)	≤ 0.005
Radial runout (mm)	≤ 0.005
Weight (kg)	34

Specification & drawing

