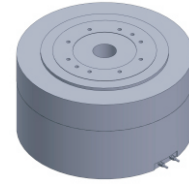


# FI-220168

## DD Motor



MAIN PARAMETERS	VALUE
Voltage(VAC)	220
Rated torque (Nm)	86.6
Instant Max Torque (Nm)	266
Torque constant (Nm/Arms)	15.2
Rated Current (Arms)	5.7
Instant Max Current (Arms)	35
Resistance ( $\Omega$ )	4.2
Inductance (mH)	11.6
Pole-pairs number (2P)	20
Back EMF coefficient (Vrms/rad/s)	12.4
Rated Output (W)	726.1
Rotor inertia $10^{-4}$ kg.m <sup>2</sup>	360
Rated Speed (rpm)	80
Max Speed (rpm)	150
Positioning accuracy(arc_sec)	$\pm 20$
Repeat positioning accuracy (arc_sec)	$\pm 1.5$
Encoder resolution (sin/cos)	11740
Axial load (N)	8000
Radial load (N.m)	120
Axial runout (mm)	$\leq 0.005$
Radial runout (mm)	$\leq 0.005$
Weight (kg)	24.7

### Specification & drawing

