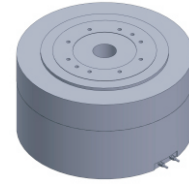


FI-220123

DD Motor



MAIN PARAMETERS	VALUE
Voltage(VAC)	220
Rated torque (Nm)	50.6
Instant Max Torque (Nm)	152
Torque constant (Nm/Arms)	9.2
Rated Current (Arms)	5.5
Instant Max Current (Arms)	16.5
Resistance (Ω)	3.2
Inductance (mH)	8.5
Pole-pairs number (2P)	20
Back EMF coefficient (Vrms/rad/s)	8.3
Rated Output (W)	530.3
Rotor inertia 10^{-4} kg.m ²	340
Rated Speed (rpm)	100
Max Speed (rpm)	200
Positioning accuracy(arc_sec)	± 20
Repeat positioning accuracy (arc_sec)	± 1.5
Encoder resolution (sin/cos)	11740
Axial load (N)	8000
Radial load (N.m)	120
Axial runout (mm)	≤ 0.005
Radial runout (mm)	≤ 0.005
Weight (kg)	20

Specification & drawing

