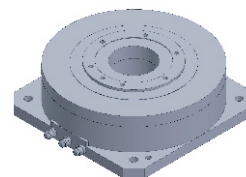


# FI-18095

## DD Motor



MAIN PARAMETERS	VALUE
Voltage(VAC)	220
Rated torque (Nm)	25.2
Instant Max Torque (Nm)	76
Torque constant (Nm/Arms)	5.6
Rated Current (Arms)	4.5
Instant Max Current (Arms)	13.5
Resistance ( $\Omega$ )	1.5
Inductance (mH)	2.6
Pole-pairs number (2P)	16
Back EMF coefficient (Vrms/rad/s)	4.6
Rated Output (W)	396.1
Rotor inertia $10^{-4}\text{kg.m}^2$	67
Rated Speed (rpm)	150
Max Speed (rpm)	300
Positioning accuracy(arc_sec)	$\pm 20$
Repeat positioning accuracy (arc_sec)	$\pm 1.5$
Encoder resolution (sin/cos)	11740
Axial load (N)	4000
Radial load (N.m)	50
Axialrunout (mm)	$\leq 0.005$
Radial runout (mm)	$\leq 0.005$
Weight (kg)	9.1

### Specification & drawing

