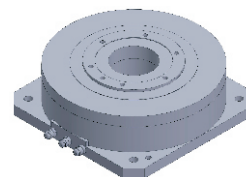


FI-18055 DD Motor



MAIN PARAMETERS	VALUE
Voltage(VAC)	220
Rated torque (Nm)	14
Instant Max Torque (Nm)	42
Torque constant (Nm/Arms)	3.1
Rated Current (Arms)	4.5
Instant Max Current (Arms)	13.5
Resistance (Ω)	3.5
Inductance (mH)	5.7
Pole-pairs number (2P)	16
Back EMF coefficient (Vrms/rad/s)	2.5
Rated Output (W)	220.1
Rotor inertia $10^{-4}kg.m^2$	40
Rated Speed (rpm)	150
Max Speed (rpm)	250
Positioning accuracy(arc_sec)	± 20
Repeat positioning accuracy (arc_sec)	± 1.5
Encoder resolution (sin/cos)	11740
Axial load (N)	4000
Radial load (N.m)	50
Axialrunout (mm)	≤ 0.005
Radial runout (mm)	≤ 0.005
Weight (kg)	5.4

Specification & drawing

