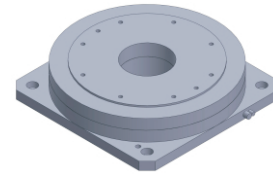


# FI-170100

## DD Motor



MAIN PARAMETERS	VALUE
Voltage(VAC)	220
Rated torque (Nm)	17
Instant Max Torque (Nm)	55.3
Torque constant (Nm/Arms)	4.3
Rated Current (Arms)	4
Instant Max Current (Arms)	13
Resistance (Ω)	11
Inductance (mH)	16.8
Pole-pairs number (2P)	19
Back EMF coefficient (Vrms/rad/s)	3.2
Rated Output (W)	267.2
Rotor inertia 10 <sup>-4</sup> kg.m <sup>2</sup>	80
Rated Speed (rpm)	150
Max Speed (rpm)	300
Positioning accuracy(arc_sec)	± 20
Repeatability (arc_sec)	± 1.5
Encoder resolution (sin/cos)	11740
Axial load (N)	2500
Radial load (N.m)	60
Axial runout (mm)	≤0.005
Radial runout (mm)	≤0.005
Weight (kg)	5.2

### Specification & drawing

