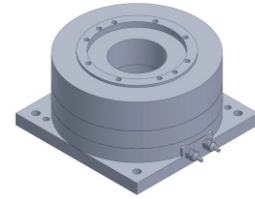


FI-12064

DD Motor



MAIN PARAMETERS	VALUE
Voltage(VAC)	220
Rated torque (Nm)	2.4
Instant Max Torque (Nm)	8
Torque constant (Nm/Arms)	1.7
Rated Current (Arms)	1.5
Instant Max Current (Arms)	5
Resistance (Ω)	2.9
Inductance (mH)	3.1
Pole-pairs number (2P)	13
Back EMF coefficient (Vrms/rad/s)	2
Rated Output (W)	37.7
Rotor inertia 10^{-4} kg.m ²	26
Rated Speed (rpm)	150
Max Speed (rpm)	300
Positioning accuracy(arc_sec)	± 20
Repeat positioning accuracy (arc_sec)	± 1.5
Encoder resolution (sin/cos)	8192
Axial load (N)	1200
Radial load (N.m)	60
Axial runout (mm)	≤ 0.005
Radial runout (mm)	≤ 0.005
Weight (kg)	3.9

Specification & drawing

