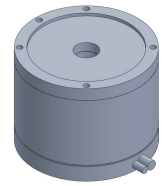


FE-8067

DD Motor (External Rotor)



MAIN PARAMETERS	VALUE
Voltage(VAC)	220
Rated torque (Nm)	2.5
Instant Max Torque (Nm)	8.3
Torque constant (Nm/Arms)	2
Rated Current (Arms)	1.5
Instant Max Current (Arms)	5
Resistance (Ω)	5.5
Inductance (mH)	6.2
Pole-pairs number (2P)	10
Back EMF coefficient (Vrms/rad/s)	0.52
Rated Output (W)	52.4
Rotor inertia 10^{-4}kg.m^2	6
Rated Speed (rpm)	200
Max Speed (rpm)	360
Positioning accuracy(arc_sec)	± 32
Repeat positioning accuracy (arc_sec)	± 2.5
Encoder resolution (sin/cos)	8192
Axial load (N)	1000
Radial load (N.m)	10
Axialrunout (mm)	≤ 0.01
Radial runout (mm)	≤ 0.01
Weight (kg)	2.3

Specification & drawing

