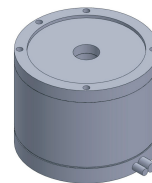


FE-8047

DD Motor (External Rotor)



MAIN PARAMETERS	VALUE
Voltage(VAC)	220
Rated torque (Nm)	1
Instant Max Torque (Nm)	3.3
Torque constant (Nm/Arms)	1
Rated Current (Arms)	1.5
Instant Max Current (Arms)	5
Resistance (Ω)	3.8
Inductance (mH)	4.1
Pole-pairs number (2P)	10
Back EMF coefficient (Vrms/rad/s)	0.25
Rated Output (W)	21.0
Rotor inertia 10^{-4}kg.m^2	3.5
Rated Speed (rpm)	200
Max Speed (rpm)	360
Positioning accuracy(arc_sec)	± 32
Repeat positioning accuracy (arc_sec)	± 2.5
Encoder resolution (sin/cos)	8192
Axial load (N)	1000
Radial load (N.m)	10
Axialrunout (mm)	≤ 0.01
Radial runout (mm)	≤ 0.01
Weight (kg)	1.7

Specification & drawing

