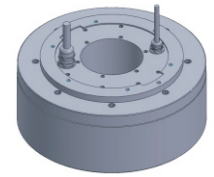


FE-263188

DD Motor(External Rotor)



MAIN PARAMETERS	VALUE
Voltage(VAC)	220
Rated torque (Nm)	250.0
Instant Max Torque (Nm)	500
Torque constant (Nm/Arms)	35.2
Rated Current (Arms)	7.1
Instant Max Current (Arms)	14.2
Resistance (Ω)	6.7
Inductance (mH)	22.8
Pole-pairs number (2P)	20
Back EMF coefficient (Vrms/rad/s)	28.7
Rated Output (W)	1310.0
Rotor inertia $10^{-4}kg.m^2$	2100
Rated Speed (rpm)	50
Max Speed (rpm)	100
Positioning accuracy(arc_sec)	± 20
Repeat positioning accuracy (arc_sec)	± 1.5
Encoder resolution (sin/cos)	16384
Axial load (N)	40000
Radial load (N.m)	400
Axialrunout (mm)	≤ 0.005
Radial runout (mm)	≤ 0.005
Weight (kg)	49.1

Specification & drawing

