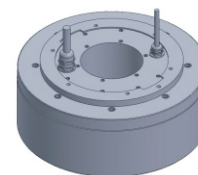


# FE-263163

## DD Motor(External Rotor)



MAIN PARAMETERS	VALUE
Voltage(VAC)	220
Rated torque (Nm)	210
Instant Max Torque (Nm)	420
Torque constant (Nm/Arms)	29.6
Rated Current (Arms)	7.1
Instant Max Current (Arms)	14.2
Resistance (Ω)	2
Inductance (mH)	7
Pole-pairs number (2P)	23
Back EMF coefficient (Vrms/rad/s)	10.1
Rated Output (W)	1760.6
Rotor inertia 10 <sup>-4</sup> kg.m <sup>2</sup>	1600
Rated Speed (rpm)	80
Max Speed (rpm)	150
Positioning accuracy(arc_sec)	± 20
Repeat positioning accuracy (arc_sec)	± 1.5
Encoder resolution (sin/cos)	16384
Axial load (N)	40000
Radial load (N.m)	400
Axialrunout (mm)	≤0.005
Radial runout (mm)	≤0.005
Weight (kg)	44

### Specification & drawing

