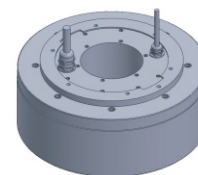


FE-263113

DD Motor(External Rotor)



MAIN PARAMETERS	VALUE
Voltage(VAC)	220
Rated torque (Nm)	95.0
Instant Max Torque (Nm)	190
Torque constant (Nm/Arms)	13.4
Rated Current (Arms)	7.1
Instant Max Current (Arms)	14.2
Resistance (Ω)	2.7
Inductance (mH)	8.3
Pole-pairs number (2P)	20
Back EMF coefficient (Vrms/rad/s)	10.9
Rated Output (W)	796.5
Rotor inertia $10^{-4}kg.m^2$	1000
Rated Speed (rpm)	80
Max Speed (rpm)	150
Positioning accuracy(arc_sec)	± 20
Repeat positioning accuracy (arc_sec)	± 1.5
Encoder resolution (sin/cos)	16384
Axial load (N)	40000
Radial load (N.m)	400
Axialrunout (mm)	≤ 0.005
Radial runout (mm)	≤ 0.005
Weight (kg)	24.4

Specification & drawing

