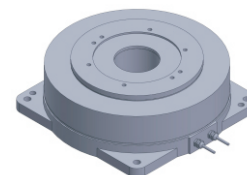


FE-17065

DD Motor(External Rotor)



MAIN PARAMETERS	VALUE
Voltage(VAC)	220
Rated torque (Nm)	9
Instant Max Torque (Nm)	30
Torque constant (Nm/Arms)	6
Rated Current (Arms)	1.5
Instant Max Current (Arms)	5
Resistance (Ω)	10
Inductance (mH)	29
Pole-pairs number (2P)	19
Back EMF coefficient (Vrms/rad/s)	4
Rated Output (W)	141.5
Rotor inertia 10^{-4}kg.m^2	76
Rated Speed (rpm)	150
Max Speed (rpm)	240
Positioning accuracy(arc_sec)	± 20
Repeat positioning accuracy (arc_sec)	± 1.5
Encoder resolution (sin/cos)	11740
Axial load (N)	10000
Radial load (N.m)	150
Axialrunout (mm)	≤ 0.005
Radial runout (mm)	≤ 0.005
Weight (kg)	5.6

Specification & drawing

