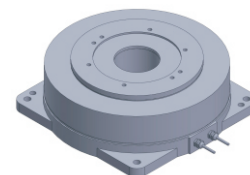


# FE-17050

## DD Motor(External Rotor)



MAIN PARAMETERS	VALUE
Voltage(VAC)	220
Rated torque (Nm)	4.5
Instant Max Torque (Nm)	14.0
Torque constant (Nm/Arms)	3.4
Rated Current (Arms)	1.4
Instant Max Current (Arms)	4.2
Resistance ( $\Omega$ )	5.0
Inductance (mH)	7.6
Pole-pairs number (2P)	15
Back EMF coefficient (Vrms/rad/s)	2.8
Rated Output (W)	117.9
Rotor inertia $10^{-4}kg.m^2$	68
Rated Speed (rpm)	250
Max Speed (rpm)	450
Positioning accuracy(arc_sec)	$\pm 20$
Repeat positioning accuracy (arc_sec)	$\pm 1.5$
Encoder resolution (sin/cos)	11740
Axial load (N)	4000
Radial load (N.m)	40
Axialrunout (mm)	$\leq 0.005$
Radial runout (mm)	$\leq 0.005$
Weight (kg)	3.9

### Specification & drawing

