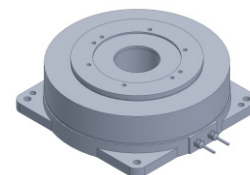


FE-170155

DD Motor(External Rotor)



MAIN PARAMETERS	VALUE
Voltage(VAC)	220
Rated torque (Nm)	59.5
Instant Max Torque (Nm)	179
Torque constant (Nm/Arms)	23.8
Rated Current (Arms)	2.5
Instant Max Current (Arms)	7.5
Resistance (Ω)	20.0
Inductance (mH)	45
Pole-pairs number (2P)	15
Back EMF coefficient (Vrms/rad/s)	19.4
Rated Output (W)	374.1
Rotor inertia $10^{-4}kg.m^2$	410
Rated Speed (rpm)	60
Max Speed (rpm)	120
Positioning accuracy(arc_sec)	± 20
Repeat positioning accuracy (arc_sec)	± 1.5
Encoder resolution (sin/cos)	11740
Axial load (N)	15000
Radial load (N.m)	200
Axialrunout (mm)	≤ 0.005
Radial runout (mm)	≤ 0.005
Weight (kg)	18.1

Specification & drawing

