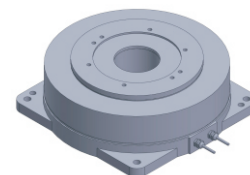


FE-170125

DD Motor(External Rotor)



MAIN PARAMETERS	VALUE
Voltage(VAC)	220
Rated torque (Nm)	41.8
Instant Max Torque (Nm)	125
Torque constant (Nm/Arms)	16.7
Rated Current (Arms)	2.5
Instant Max Current (Arms)	7.5
Resistance (Ω)	14.4
Inductance (mH)	34.7
Pole-pairs number (2P)	15
Back EMF coefficient (Vrms/rad/s)	13.6
Rated Output (W)	328.5
Rotor inertia $10^{-4}kg.m^2$	320
Rated Speed (rpm)	75
Max Speed (rpm)	150
Positioning accuracy(arc_sec)	± 20
Repeat positioning accuracy (arc_sec)	± 1.5
Encoder resolution (sin/cos)	11740
Axial load (N)	15000
Radial load (N.m)	200
Axialrunout (mm)	≤ 0.005
Radial runout (mm)	≤ 0.005
Weight (kg)	13.9

Specification & drawing

