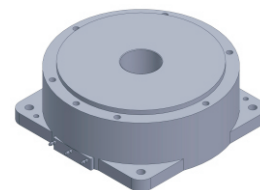


# FE-14050

## DD Motor(External Rotor)



MAIN PARAMETERS	VALUE
Voltage(VAC)	220
Rated torque (Nm)	6.0
Instant Max Torque (Nm)	16.8
Torque constant (Nm/Arms)	2.4
Rated Current (Arms)	2.5
Instant Max Current (Arms)	7
Resistance ( $\Omega$ )	3.7
Inductance (mH)	3.8
Pole-pairs number (2P)	14
Back EMF coefficient (Vrms/rad/s)	2.0
Rated Output (W)	188.6
Rotor inertia $10^{-4}kg.m^2$	45
Rated Speed (rpm)	300
Max Speed (rpm)	600
Positioning accuracy(arc_sec)	$\pm 20$
Repeat positioning accuracy (arc_sec)	$\pm 1.5$
Encoder resolution (sin/cos)	8192
Axial load (N)	2500
Radial load (N.m)	20
Axialrunout (mm)	$\leq 0.005$
Radial runout (mm)	$\leq 0.005$
Weight (kg)	3.4

### Specification & drawing

