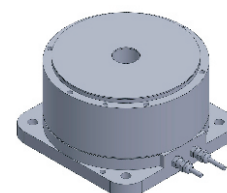


FE-11295

DD Motor(External Rotor)



MAIN PARAMETERS	VALUE
Voltage(VAC)	220
Rated torque (Nm)	8.5
Instant Max Torque (Nm)	25.5
Torque constant (Nm/Arms)	3.4
Rated Current (Arms)	2.5
Instant Max Current (Arms)	7.5
Resistance (Ω)	4.6
Inductance (mH)	4.2
Pole-pairs number (2P)	14
Back EMF coefficient (Vrms/rad/s)	2.8
Rated Output (W)	133.6
Rotor inertia $10^{-4}kg.m^2$	38
Rated Speed (rpm)	150
Max Speed (rpm)	250
Positioning accuracy(arc_sec)	± 20
Repeat positioning accuracy (arc_sec)	± 1.5
Encoder resolution (sin/cos)	8192
Axial load (N)	2500
Radial load (N.m)	20
Axialrunout (mm)	≤ 0.005
Radial runout (mm)	≤ 0.005
Weight (kg)	4.5

Specification & drawing

