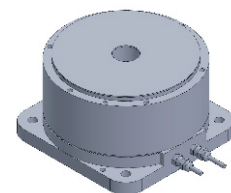


FE-11265

DD Motor(External Rotor)



MAIN PARAMETERS	VALUE
Voltage(VAC)	220
Rated torque (Nm)	3.0
Instant Max Torque (Nm)	9
Torque constant (Nm/Arms)	1.2
Rated Current (Arms)	2.5
Instant Max Current (Arms)	7.5
Resistance (Ω)	2.2
Inductance (mH)	1.8
Pole-pairs number (2P)	14
Back EMF coefficient (Vrms/rad/s)	1.0
Rated Output (W)	62.9
Rotor inertia $10^{-4}\text{kg}\cdot\text{m}^2$	26
Rated Speed (rpm)	200
Max Speed (rpm)	350
Positioning accuracy(arc_sec)	± 20
Repeat positioning accuracy (arc_sec)	± 1.5
Encoder resolution (sin/cos)	8192
Axial load (N)	2500
Radial load (N.m)	20
Axialrunout (mm)	≤ 0.005
Radial runout (mm)	≤ 0.005
Weight (kg)	3.2

Specification & drawing

