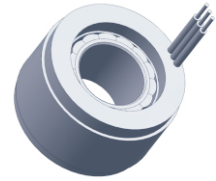


U19 series

Frameless Torque Motor



MAIN PARAMETERS		U1919	U1934
Voltage(VDC)		24	24
Rated Output (W)		12.58	16.77
Rated torque (Nm)		0.02	0.04
Instant Max Torque (Nm)		0.05	0.11
Rated Current (Arms)		2	2.5
Instant Max Current (Arms)		5.5	7.5
Rated Speed (rpm)		6000	4000
Max Speed (rpm)		8000	6000
Torque constant (Nm/Arms)		0.01	0.02
Rotor inertia 10 ⁻⁴ kg.m ²		0.005	0.01
Back EMF coefficient(V/Krpm)		1.5	2.4
Resistance (Ω)		1.9	1.8
Inductance (mH)		0.4	0.38
Pole-pairs number (2P)		5	5
Weight (kg)		19.9	34.9
Motor height L(mm)	L1	16	31
	L2	15	30
	L3	19.9	34.9

Specification & drawing

