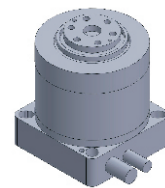


FI-40series DD Motor



MAIN PARAMETERS	FI-4048	FI-4065
Voltage(VDC)	48	48
Rated torque (Nm)	0.25	0.5
Instant Max Torque (Nm)	0.8	1.3
Torque constant (Nm/Arms)	0.1	0.17
Rated Current (Arms)	2.5	3
Instant Max Current (Arms)	8	8
Resistance (Ω)	1.8	2.4
Inductance (mH)	1.1	1.7
Pole-pairs number (2P)	7	7
Back EMF coefficient (Vrms/rad/s)	0.1	0.12
Rated Output (W)	7.9	15.7
Rotor inertia 10^{-4} kg.m ²	0.04	0.05
Rated Speed (rpm)	300	300
Max Speed (rpm)	600	600
Positioning accuracy(arc_sec)	± 40	± 40
Repeat positioning accuracy (arc_sec)	± 5	± 5
Encoder resolution (sin/cos)	2048	2048
Axial load (N)	600	600
Radial load (N.m)	6	6
Axial runout (mm)	≤ 0.01	≤ 0.01
Radial runout (mm)	≤ 0.01	≤ 0.01
Weight (kg)	0.4	0.55
Motor height L(mm)	48	65

Specification & drawing

