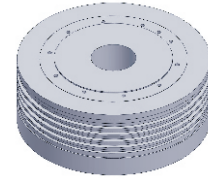


# FI-375 series DD Motor



MAIN PARAMETERS	FI-375150	FI-375200
Voltage(VAC)	220	220
Rated torque (Nm)	200	320
Instant Max Torque (Nm)	625	1000
Torque constant (Nm/Arms)	25	45
Rated Current (Arms)	8	8
Instant Max Current (Arms)	25	25
Resistance (Ω)	5.2	5.2
Inductance (mH)	32	32
Pole-pairs number (2P)	42	42
Back EMF coefficient (Vrims/rad/s)	18.8	26.6
Rated Output (W)	1257.6	2012.2
Rotor inertia 10 <sup>-4</sup> kg.m <sup>2</sup>	3900	5200
Rated Speed (rpm)	60	60
Max Speed (rpm)	120	120
Positioning accuracy(arc_sec)	± 20	± 20
Repeat positioning accuracy (arc_sec)	± 1.5	± 1.5
Encoder resolution (sin/cos)	16384	16384
Axial load (N)	20000	20000
Radial load (N.m)	1200	1200
Axial runout (mm)	≤0.005	≤0.005
Radial runout (mm)	≤0.005	≤0.005
Weight (kg)	75	90
Motor height L(mm)	150	200

## Specification & drawing

