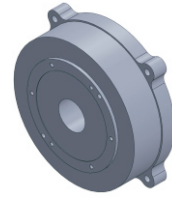


FI-280 series DD Motor



MAIN PARAMETERS	FI-28095	FI-280145
Voltage(VAC)	220	220
Rated torque (Nm)	45	90
Instant Max Torque (Nm)	146.3	288
Torque constant (Nm/Arms)	11.3	18
Rated Current (Arms)	4	5
Instant Max Current (Arms)	13	16
Resistance (Ω)	5.5	3.3
Inductance (mH)	24	15.5
Pole-pairs number (2P)	23	23
Back EMF coefficient (Vrims/rad/s)	7.1	10
Rated Output (W)	565.9	1131.8
Rotor inertia 10 ⁻⁴ kg.m ²	312	512
Rated Speed (rpm)	120	120
Max Speed (rpm)	240	240
Positioning accuracy(arc_sec)	± 20	± 20
Repeat positioning accuracy (arc_sec)	± 1.5	± 1.5
Encoder resolution (sin/cos)	16384	16384
Axial load (N)	12000	12000
Radial load (N.m)	400	400
Axial runout (mm)	≤0.005	≤0.005
Radial runout (mm)	≤0.005	≤0.005
Weight (kg)	24.2	46
Motor height L(mm)	95	145

Specification & drawing

