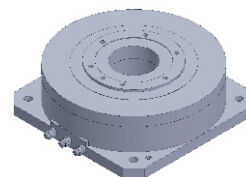


FI-180 series DD Motor



MAIN PARAMETERS	FI-18055	FI-18095	FI-180125
Voltage(VAC)	220	220	220
Rated torque (Nm)	14	25.2	40.1
Instant Max Torque (Nm)	42	76	120
Torque constant (Nm/Arms)	3.1	5.6	8.9
Rated Current (Arms)	4.5	4.5	4.5
Instant Max Current (Arms)	13.5	13.5	13.5
Resistance (Ω)	3.5	1.5	8
Inductance (mH)	5.7	2.6	15.8
Pole-pairs number (2P)	16	16	16
Back EMF coefficient (Vrims/rad/s)	2.5	4.6	7.3
Rated Output (W)	220.1	396.1	630.4
Rotor inertia 10^{-4} kg.m ²	40	67	100
Rated Speed (rpm)	150	150	150
Max Speed (rpm)	250	300	250
Positioning accuracy(arc_sec)	± 20	± 20	± 20
Repeat positioning accuracy (arc_sec)	± 1.5	± 1.5	± 1.5
Encoder resolution (sin/cos)	11740	11740	11740
Axial load (N)	4000	4000	4000
Radial load (N.m)	50	50	50
Axial runout (mm)	≤ 0.005	≤ 0.005	≤ 0.005
Radial runout (mm)	≤ 0.005	≤ 0.005	≤ 0.005
Weight (kg)	5.4	9.1	13
Motor height L(mm)	55	95	125

Specification & drawing

