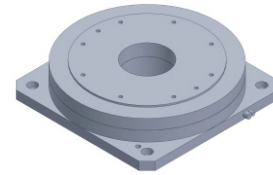


FI-170 series DD Motor



MAIN PARAMETERS	FI-17050	FI-170100
Voltage(VAC)	220	220
Rated torque (Nm)	5.4	17
Instant Max Torque (Nm)	16	55.3
Torque constant (Nm/Arms)	1.8	4.3
Rated Current (Arms)	3	4
Instant Max Current (Arms)	9	13
Resistance (Ω)	6.9	11
Inductance (mH)	8.3	16.8
Pole-pairs number (2P)	20	19
Back EMF coefficient (Vrims/rad/s)	1.5	3.2
Rated Output (W)	141.5	267.2
Rotor inertia 10^{-4} kg.m ²	40	80
Rated Speed (rpm)	250	150
Max Speed (rpm)	500	300
Positioning accuracy(arc_sec)	± 20	± 20
Repeat positioning accuracy (arc_sec)	± 1.5	± 1.5
Encoder resolution (sin/cos)	11740	11740
Axial load (N)	2500	2500
Radial load (N.m)	20	60
Axial runout (mm)	≤ 0.005	≤ 0.005
Radial runout (mm)	≤ 0.005	≤ 0.005
Weight (kg)	3.9	5.2
Motor height L(mm)	50	100

Specification & drawing

