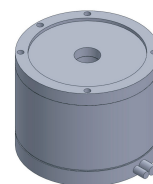


FE-80 series DD Motor (External Rotor)



MAIN PARAMETERS	FE-8047	FE-8067
Voltage(VAC)	220	220
Rated torque (Nm)	1	2.5
Instant Max Torque (Nm)	3.3	8.3
Torque constant (Nm/Arms)	1	2
Rated Current (Arms)	1.5	1.5
Instant Max Current (Arms)	5	5
Resistance (Ω)	3.8	5.5
Inductance (mH)	4.1	6.2
Pole-pairs number (2P)	10	10
Back EMF coefficient (Vrims/rad/s)	0.25	0.52
Rated Output (W)	21.0	52.4
Rotor inertia 10^{-4}kg.m^2	3.5	6
Rated Speed (rpm)	200	200
Max Speed (rpm)	360	360
Positioning accuracy(arc_sec)	± 32	± 32
Repeat positioning accuracy (arc_sec)	± 2.5	± 2.5
Encoder resolution (sin/cos)	8192	8192
Axial load (N)	1000	1000
Radial load (N.m)	10	10
Axialrunout (mm)	≤ 0.01	≤ 0.01
Radial runout (mm)	≤ 0.01	≤ 0.01
Weight (kg)	1.7	2.3
Motor height L(mm)	47	67

Specification & drawing

