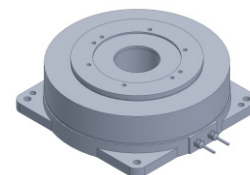


# FE-170 series DD Motor(External Rotor)



MAIN PARAMETERS	FE-17050	FE-17065	FE-17095	FE-170125	FE-170155
Voltage(VAC)	220	220	220	220	220
Rated torque (Nm)	4.5	9	23.8	41.8	59.5
Instant Max Torque (Nm)	14.0	30	71	125	179
Torque constant (Nm/Arms)	3.4	6	9.5	16.7	23.8
Rated Current (Arms)	1.4	1.5	2.5	2.5	2.5
Instant Max Current (Arms)	4.2	5	7.5	7.5	7.5
Resistance (Ω)	5.0	10	9.4	14.4	20.0
Inductance (mH)	7.6	29	17.9	34.7	45
Pole-pairs number (2P)	15	19	15	15	15
Back EMF coefficient (Vrms/rad/s)	2.8	4	7.8	13.6	19.4
Rated Output (W)	117.9	141.5	249.4	328.5	374.1
Rotor inertia 10 <sup>-4</sup> kg.m <sup>2</sup>	68	76	230	320	410
Rated Speed (rpm)	250	150	100	75	60
Max Speed (rpm)	450	240	190	150	120
Positioning accuracy(arc_sec)	±20	±20	±20	±20	±20
Repeat positioning accuracy (arc_sec)	±1.5	±1.5	±1.5	±1.5	±1.5
Encoder resolution (sin/cos)	11740	11740	11740	11740	11740
Axial load (N)	4000	10000	15000	15000	15000
Radial load (N.m)	40	150	200	200	200
Axialrunout (mm)	≤0.005	≤0.005	≤0.005	≤0.005	≤0.005
Radialrunout (mm)	≤0.005	≤0.005	≤0.005	≤0.005	≤0.005
Weight (kg)	3.9	5.6	10.1	13.9	18.1
Motor height L(mm)	50	65	95	125	155

## Specification & drawing

