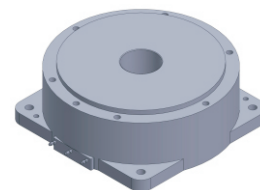


FE-140 series

DD Motor(External Rotor)



MAIN PARAMETERS	FE-14050	FE-14080
Voltage(VAC)	220	220
Rated torque (Nm)	6.0	10.5
Instant Max Torque (Nm)	16.8	28
Torque constant (Nm/Arms)	2.4	4.2
Rated Current (Arms)	2.5	2.5
Instant Max Current (Arms)	7	7
Resistance (Ω)	3.7	5.9
Inductance (mH)	3.8	6
Pole-pairs number (2P)	14	14
Back EMF coefficient (Vrims/rad/s)	2.0	3.4
Rated Output (W)	188.6	220.1
Rotor inertia $10^{-4}\text{kg}\cdot\text{m}^2$	45	76
Rated Speed (rpm)	300	200
Max Speed (rpm)	600	350
Positioning accuracy(arc_sec)	± 20	± 20
Repeat positioning accuracy (arc_sec)	± 1.5	± 1.5
Encoder resolution (sin/cos)	8192	8192
Axial load (N)	2500	2500
Radial load (N.m)	20	20
Axial runout (mm)	≤ 0.005	≤ 0.005
Radial runout (mm)	≤ 0.005	≤ 0.005
Weight (kg)	3.4	5.6
Motor height L(mm)	50	80

Specification & drawing

