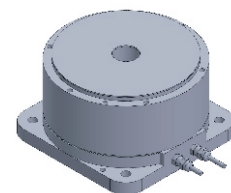


# FE-112 series DD Motor(External Rotor)



MAIN PARAMETERS	FE-11265	FE-11295
Voltage(VAC)	220	220
Rated torque (Nm)	3.0	8.5
Instant Max Torque (Nm)	9	25.5
Torque constant (Nm/Arms)	1.2	3.4
Rated Current (Arms)	2.5	2.5
Instant Max Current (Arms)	7.5	7.5
Resistance ( $\Omega$ )	2.2	4.6
Inductance (mH)	1.8	4.2
Pole-pairs number (2P)	14	14
Back EMF coefficient (Vrms/rad/s)	1.0	2.8
Rated Output (W)	62.9	133.6
Rotor inertia $10^{-4}\text{kg.m}^2$	26	38
Rated Speed (rpm)	200	150
Max Speed (rpm)	350	250
Positioning accuracy(arc_sec)	$\pm 20$	$\pm 20$
Repeat positioning accuracy (arc_sec)	$\pm 1.5$	$\pm 1.5$
Encoder resolution (sin/cos)	8192	8192
Axial load (N)	2500	2500
Radial load (N.m)	20	20
Axialrunout (mm)	$\leq 0.005$	$\leq 0.005$
Radial runout (mm)	$\leq 0.005$	$\leq 0.005$
Weight (kg)	3.2	4.5
Motor height L(mm)	65	95

## Specification & drawing

